



TO INTEGRITY ... AND BEYOND



WWW.ACET.CO.UK



this issue

105

Gauge Interface Update
Work Pack Functionality
ACET Upgrade Features
Client Updates

ACET Around the World

In the first quarter of 2009 a further 35 users were ACET trained with courses being run in **Trinidad, Vietnam** and the **United Arab Emirates**. There are now a total of 885 trained ACET users in 22 different countries around the world.

With the addition of **TAQA Energy B.V. in the Netherlands** ACET is now being used in 22 different countries around the world by 41 different sites with a total of 161 assets including Refineries, On and Offshore Installations, FPSO's and Chemical Plants.

ACET Version Details

ACET version 5.1.540 has now been beta released prior to its general release.

To upgrade your version of ACET please contact ACET Support
acet_support@oceanneering.com

Previous issues of the ACET newsletter can be viewed in the News Section of the ACET Website: www.acet.co.uk

Welcome to the April 2009 edition of the ACET newsletter.

The ACET Software system has been designed to form part of an integrated asset management approach through the storage, analysis and assessment of inspection and corrosion data within the global petrochemical industry.

ACET NEWS

VERSION 5.1

ACET Version 5.1 is beta released. This version includes: Enhanced Qualitative Risk Based Assessment, New Work Pack Functionality and Work Pack Report Creation and New Inspection Analysis (Trending and Graphing) at the Group, Item, Feature and Inspection Method levels.

HOSTING UPGRADE

Oceanneering's ACET Farm (hosting service) has been transferred to a SAN and Blades architecture which allows for greater redundancy and failover management. In addition the farm has been upgraded to the latest Citrix Technologies (XenApp) providing users with enhanced capability when connecting to the hosted solution. This along with a dedicated Internet Link assures our hosted clients of a continued high quality service.

USER GUIDE

The ACET User Guide has been updated to include the latest version of the Multimedia Module and the Qualitative RBA (Risk Based Assessment) which provides different methodologies dependent on the output format (frequency or % remaining life) and the output level (equipment or inspection method).

Revision 2.1 for version 5.1 is now available for use and can be viewed from the ACET system Help menu or downloaded from the ACET Helpdesk: <http://acethelp.oceanneering.com>

If you have forgotten your Helpdesk ID and password, please contact:
acet_support@oceanneering.com

NEW CLIENTS

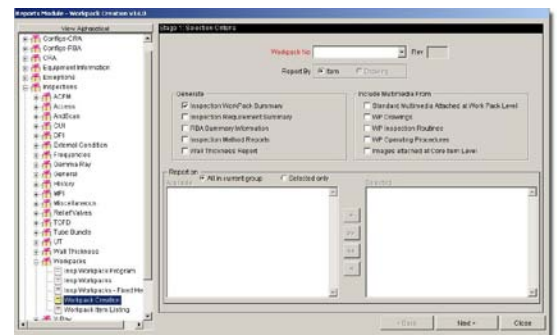
In the 3 months since the January edition of the ACET News Letter the following client has implemented the ACET system:

TAQA Energy B.V. in the Netherlands has purchased an ACET License for use on the onshore and offshore facilities in the Alkmaar region of North West Netherlands, also known as the 'Bergen Concession'.

LATEST RELEASE FUNCTIONALITY

The first two phases of the ACET **Work Pack** functional enhancements are now complete. ACET Navigator equipment groups can be loaded into the Work Pack, where feature types identified for inspection (dead legs, bends, etc) can be filtered and inspection methods assigned.

The Reporting Module can be accessed directly from the Work Pack Editor, where the new **Work Pack Creation Report** is used to generate a summary of the work pack details, the inspection requirement, a summary of the RBA output, previous inspection data, wall thickness reports and multimedia images (drawings, etc).



Contact Details

Oceaneering Inspection:

Americas:
 Station #1 Box 10267
 227 Clendenning Road
 Houma, LA 70363
 USA
 Tel +1 985 868 5097
 Fax +1 985 868 4871

Angola:
 Rua Kima Kyenda 309
 Boavista
 Luanda
 Angola
 Tel +244 2311 367 or +244
 2311 071
 Fax +244 2310 082

**Asia Pacific including
 Australia:**
 PT Samudra Oceaneering
 Komplek Bintang Industri I
 Lot No 29
 Batam 29457
 INDONESIA
 Tel +62 778 413007
 Fax +62 778 413017
 Mobile +62 811 773794
 mail: hcjajee@oceaneering.com

Office Suit, Unit No 33-2
 Level 33, Wisma UOA2
 No 21 Jalan Pinang
 50450 Kuala Lumpur
 Malaysia
 Tel +60 3 2164-6105
 Fax +60 3 2164-6104

England and Wales:
 PO Box 45, Bowesfield Lane
 Stockton-on-Tees
 Cleveland TS18 3YH
 UK
 Tel +44 (0) 1642 604661
 Fax +44 (0) 1642 670300

Middle East:
 PO Box 4074
 Abu Dhabi
 United Arab Emirates
 Tel +9712 5555 855
 Fax +9712 5552 392

PO Box 115215
 Al Moosa Tower 2, Suites 1503
 & 1504
 Sheikh Zayed Road
 Dubai
 United Arab Emirates
 Tel +971 43117500
 Fax +971 43310800

Nigeria:
 216 Port Harcourt-Aba Road
 Opposite Shell Residential Area
 Port Harcourt
 Rivers State
 Nigeria
 Tel +234 846 10070
 Fax +234 846 10070

Scotland:
 Pitmedden Road
 Dyce
 Aberdeen
 UK
 Tel +44 (0) 1224 758500



CLIENT UPDATES

In February, an ACET representative visited **Trinidad** where he implemented the ACET system within the Atlantic LNG Point Fortin, LNG Plant headquarters.

An ACET representative has recently returned from the **United Arab Emirates** where she trained 10 Dubai Petroleum personnel working on the Fateh, SW Fateh, Rashid and Falahof offshore assets. Dubai Petroleum assumed full control of the assets in April 2007 following the negotiated end of a concession agreement with a consortium of international companies.

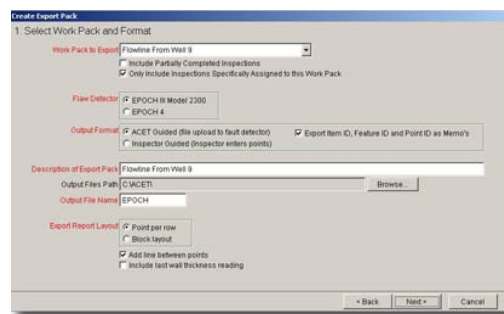
In March an ACET representative visited **Vietnam** where he trained 5 BP personnel working in support of the four major gas fields 320km offshore South of Ho Chi Minh City.

An ACET representative has recently returned from **Denmark** where he provided in-country networked multi media support to the Maersk ACET/OMS Interface Tool.

MODULE UPDATES

Gauge Interface Update

The latest Gauge View software from Olympus has been successfully tested with the ACET Inspection Gauge Interface. During the tests ACET Work Packs and Planned Inspections were created, the Work Pack was exported from ACET to the Gauge, the equipment Inspection was performed and the results recorded in the Gauge. The completed Work Pack was then imported from the Gauge to ACET where the planned Inspections were auto updated. Section 15 (Gauge Interface Module) of the User Guide has been updated to revision 2.1.



CLIENT DEVELOPMENTS

The CUI (Corrosion Under Insulation) capability in ACET has been enhanced to meet **BP's North Sea** requirements. The External Condition Inspection details for Insulation, Coating and Surface condition link with the "External Condition

– CUI Report", when the Inspection Type of CUI is selected on the External Condition Inspection details screen. In addition to this, the Exposure and Weatherproofing details are available at feature level in the Core Module.

CUI Strategy:		Exposed To Deluge?: Yes		Exposed Details:							
Drawings: FFDN-04-00FPD-1083-0001; FFDN-15-00PPD-1092-0001											
Tag #: 15SV5PIPE				# Insulated Features:	Total: 26	Inspect					
Max Op Temp:	Flow W.T.	Coat Type	Insul Type	Weather-proofing	Access Details	Est Cond Report #	Exp Date	Fitting	Comp-onent	Condition	Category
93.000	1:820	U	Aluminium Shep	5	CUI-05-VIB-006	08/05/2000	08/05/2000	Flange	Coating	Category 2	
93.000	1:820	U	Aluminium Shep	5	CUI-05-VIB-006	08/05/2000	08/05/2000	Flange	Insulation	Not Present	
93.000	1:820	U	Aluminium Shep	5	CUI-05-VIB-006	08/05/2000	08/05/2000	Flange	Coating	Category 2	
93.000	1:820	U	Aluminium Shep	5	CUI-05-VIB-006	08/05/2000	08/05/2000	Flange	Insulation	Not Present	
93.000	1:820	U	Aluminium Shep	5	CUI-05-VIB-006	08/05/2000	08/05/2000	Flange	Coating	Category 2	
93.000	1:820	U	Aluminium Shep	5	CUI-05-VIB-006	08/05/2000	08/05/2000	Flange	Insulation	Not Present	
93.000	1:820	U	Aluminium Shep	5	CUI-05-VIB-006	08/05/2000	08/05/2000	Flange	Coating	Category 2	
93.000	1:820	U	Aluminium Shep	5	CUI-05-VIB-006	08/05/2000	08/05/2000	Flange	Insulation	Not Present	
93.000	1:820	U	Aluminium Shep	5	CUI-05-VIB-006	08/05/2000	08/05/2000	Flange	Coating	Category 2	

ACET HELPDESK

The ACET Help Desk system is a web based help/ticket system used in support of the ACET Department suite of software products.

The Help Desk is available from the following web address <http://acethelp.oceaneering.com>

To receive your ID and password please contact ACET Support:

acet_support@oceaneering.com

Tel +44 (0) 1224 758500

OCEANEERING NEWS

Oceaneering's Swansea Operations.

Oceaneering Inspection has expanded its Swansea operation with a £1.2m investment which will secure the future of its long established Welsh operation and create 20 more high skilled jobs. The investment project is backed by the Welsh Assembly Government's new Single Investment Fund. Oceaneering's extended and refurbished operations base located on the Swansea Enterprise Park were formally opened on Sept. 23rd 2008 by Ian Williams, Director, Welsh Assembly Government, International Business.

The Swansea operation is home to Oceaneering's **Specialist Inspection Services (SIS)** department that in addition to providing advanced inspection technologies to the UK market supports Oceaneering's worldwide activities in Americas, Africa and Asia.

For further information on Oceaneering's Swansea Operations please contact Martin Hockley, Marketing Manager: mhockley@oceaneering.com

Oceaneering is an advanced applied technology company that provides engineering services and hardware to customers who operate in marine, space, and other harsh environments.

