



TO INTEGRITY ... AND BEYOND



WWW.ACET.CO.UK



this issue

104

New ACET User Guide

Trending and Graphing Enhancements

Risk Based Assessment

Client Developments

ACET Around the World

Congratulations to Norman Moses who has become the 850th trained ACET user. Norman is the Delivery Team Leader for **BP's Wytch Farm** facility, which is Western Europe's largest onshore oil field in one of the most environmentally sensitive areas of the UK.

With the addition of Atlantic LNG in Trinidad and Tobago, BP in Vietnam and Ithaca Energy Inc in the UK, ACET is now being used in 21 different countries around the world by 40 different sites with a total of 160 assets including Refineries, On and Offshore Installations, FPSO's and Chemical Plants.

ACET Version Details

The latest ACET release version is 5.0.524 from 17/12/2008

The current ACET development version is 5.0.526

To upgrade your version of ACET please contact ACET Support.

Welcome to the January 2009 edition of the ACET newsletter.

The ACET Software system has been designed to form part of an integrated asset management approach through the storage, analysis and assessment of inspection and corrosion data within the global petrochemical industry.

ACET NEWS

USER GUIDE

The new 'ACET User Guide' and 'Using the User Guide' documents are now available for use and can be viewed or downloaded from the ACET Helpdesk:

<http://acethelp.oceaneering.com/Main.asp>

If you have forgotten your Helpdesk ID and password, please contact:

acet_support@oceaneering.com

The ACET User Guide is available as a PDF document and can be opened using Adobe Reader Version 5 or later. However, to take full advantage of the embedded links within the document and the Acrobat navigation and search functions, we recommend that you view the ACET User Guide with Adobe Reader 8.

NEW CLIENTS

In the 3 months since the October edition of the ACET News Letter three further clients have implemented the ACET system:

Atlantic LNG in Trinidad and Tobago has purchased an ACET License. The production and processing of natural gas found in extensive fields deep under the sea, southeast of the island of Tobago, takes place on Trinidad at the Point Fortin, LNG Plant.



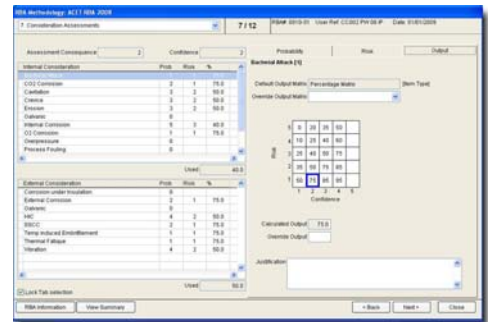
BP in Vietnam purchase an ACET License in support of the four major gas fields 320km offshore south of Ho Chi Minh City. The project includes the Lan Tay and Lan Do fields, a two-phase offshore pipeline (the longest of its kind in the world) and the 716.8 MW Phu My 3 Power Plant in Ba Ria Vung Tau province.

ACET is being used for the management of inspection and corrosion on the Beatrice oil field and Nigg oil terminal recently leased by **Ithaca Energy Inc** an independent oil & gas company with exploration and development assets in the UK sector of the North Sea.

LATEST RELEASE FUNCTIONALITY

The **Qualitative Risk Based Assessment** in ACET has been enhanced to accommodate several new methodologies as follows:

- Equipment Level "fixed frequency" outputs
- Equipment Level "% of remaining life" outputs
- Inspection Method "fixed frequency" outputs
- Inspection Method "% of remaining life" outputs



CLIENT UPDATES

An ACET representative has recently returned from Azerbaijan where she trained 20 BP personnel working on the ACG, BTC, Shah Deniz and DWG assets. **BP Azerbaijan** has recently purchased the RBA and Process Stream modules

Contact Details

Oceaneering Inspection:

Americas:
 Station #1 Box 10267
 227 Clendenning Road
 Houma, LA 70363
 USA
 Tel +1 985 868 5097
 Fax +1 985 868 4871

Angola:
 Rua Kima Kyenda 309
 Boavista
 Luanda
 Angola
 Tel +244 2311 367 or +244
 2311 071
 Fax +244 2310 082

**Asia Pacific including
 Australia:**
 PT Samudra Oceaneering
 Komplek Bintang Industri I
 Lot No 29
 Batam 29457
 INDONESIA
 Tel +62 778 413007
 Fax +62 778 413017
 Mobile +62 811 773794
 mail: hcjajee@oceaneering.com

Office Suit, Unit No 33-2
 Level 33, Wisma UOA2
 No 21 Jalan Pinang
 50450 Kuala Lumpur
 Malaysia
 Tel +60 3 2164-6105
 Fax +60 3 2164-6104

England and Wales:
 PO Box 45, Bowesfield Lane
 Stockton-on-Tees
 Cleveland TS18 3YH
 UK
 Tel +44 (0) 1642 604661
 Fax +44 (0) 1642 670300

Middle East:
 PO Box 4074
 Abu Dhabi
 United Arab Emirates
 Tel +9712 5555 855
 Fax +9712 5552 392

PO Box 115215
 Al Moosa Tower 2, Floor 12B
 Sheikh Zayed Road
 Dubai
 United Arab Emirates
 Tel +971 43117500
 Fax +971 43310800

Nigeria:
 216 Port Harcourt-Aba Road
 Opposite Shell Residential Area
 Port Harcourt
 Rivers State
 Nigeria
 Tel +234 846 10070
 Fax +234 846 10070

Scotland:
 Pittmedden Road
 Dyce
 Aberdeen
 UK
 Tel +44 (0) 1224 758500
 Fax +44 (0) 1224 758519



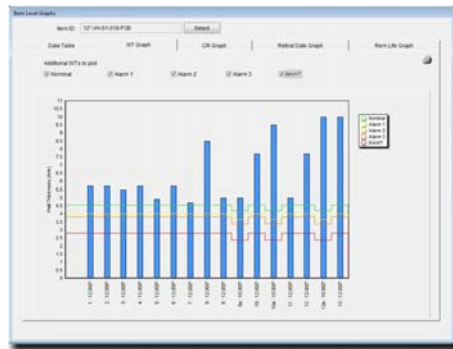
and a new database for the Deep Water Gunashli, which completes the third phase of development of the Azeri-Chirag-Gunashli (ACG) field in the Azerbaijan sector of the Caspian Sea.

An ACET representative has recently returned from **Repsol YPF in Argentina** where he visited the Mendoza, El Portón and El Rincón sites, to progress the implementation of the system and the requirements associated with this process. The trip included a meeting with the project managers in the Buenos Aires HQ.

NEW DEVELOPMENTS

Trending and Graphing Enhancements

The Inspection Analysis capabilities in ACET are being enhanced with the addition of a new Graphing capability which will work at the Group, Item, Feature and Method levels within ACET. Additional retiral dates are also derived from the Coupon, Probe, Circuit, Loops and Strata corrosion rates. In addition to this the existing Trending capability is being expanded to include Area Mapping, Eddy Current, Radiography (Gamma and X-Ray), and TOFD along with the ability to set and define the data being used as the baseline reading.

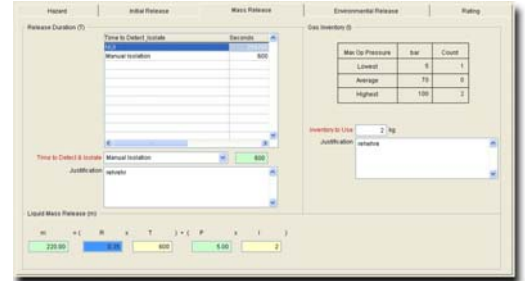


CLIENT DEVELOPMENTS

BP North Sea Site Technical Practice (STP) NSSPU-GP-06-10-2 for the Practical Application of Risk Based Inspection is being developed within ACET. It is due for release Q1 2009 and will provide BP with their RBI methodology through consideration of:

- Common input rules
- Common output rules
- RBI team makeup
- Inspection intervals
- Effective utilisation of RBI outputs
- RBI methodology and the Cyclic nature of the RBI process

The importance of the output of the RBI assessment for determination and/or update of the corrosion mitigation and monitoring strategies for the Asset, as well as for determination of inspection plans, will also be highlighted.



ACET HELPDESK

The ACET Help Desk system is a web based help/ticket system used in support of the ACET Department suite of software products.

The Help Desk is available from the following web address <http://acethelp.oceaneering.com>

To receive your ID and password please contact ACET Support:

acet_support@oceaneering.com

Tel +44 (0) 1224 758500

OCEANEERING NEWS

Oceaneering Inspection in Qatar

Qatar Operating Company Limited have awarded Oceaneering Inspection a new three year contract for the provision of On-stream NDT Inspection, Specialist Inspection Services, and the provision of Inspection personnel for onshore and offshore assets.

Offshore assets are located approximately 80 kilometres northeast of Qatar's mainland where twenty-two production wells have been drilled and completed to supply over 1,650 million standard cubic feet (45 million cubic metres) of raw natural gas per day from the fields' natural reservoir. Onshore operations occupy a site within Ras Laffan Industrial City on a plot of land 3.7 kilometres in area. The plant consists of three trains to process the natural gas into Liquefied Natural Gas (LNG). The current capacity of the trains is 10 million tonnes per annum of LNG.

For further information on Oceaneering Inspection in Qatar please contact Martin Hockley, Marketing Manager: mhockley@oceaneering.com

Oceaneering is an advanced applied technology company that provides engineering services and hardware to customers who operate in marine, space, and other harsh environments.

